



MONTHLY MEMBERSHIP PROGRESS REPORT

District 43 Y

Results as of: 06/30/2019

GMT: STEVE ANTON

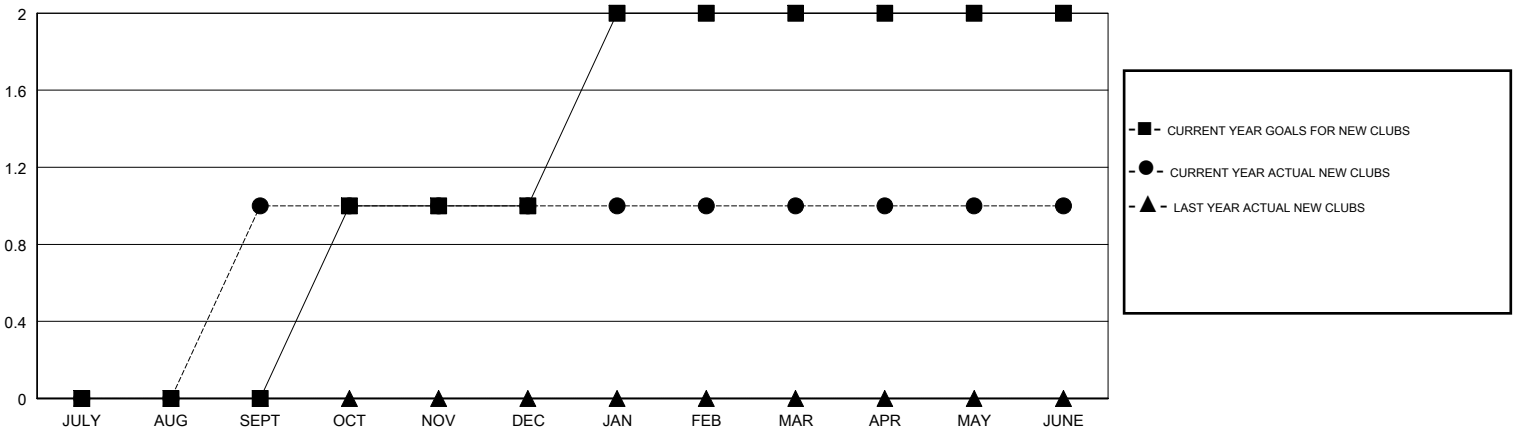
LOCATION KENTUCKY

GMT CA

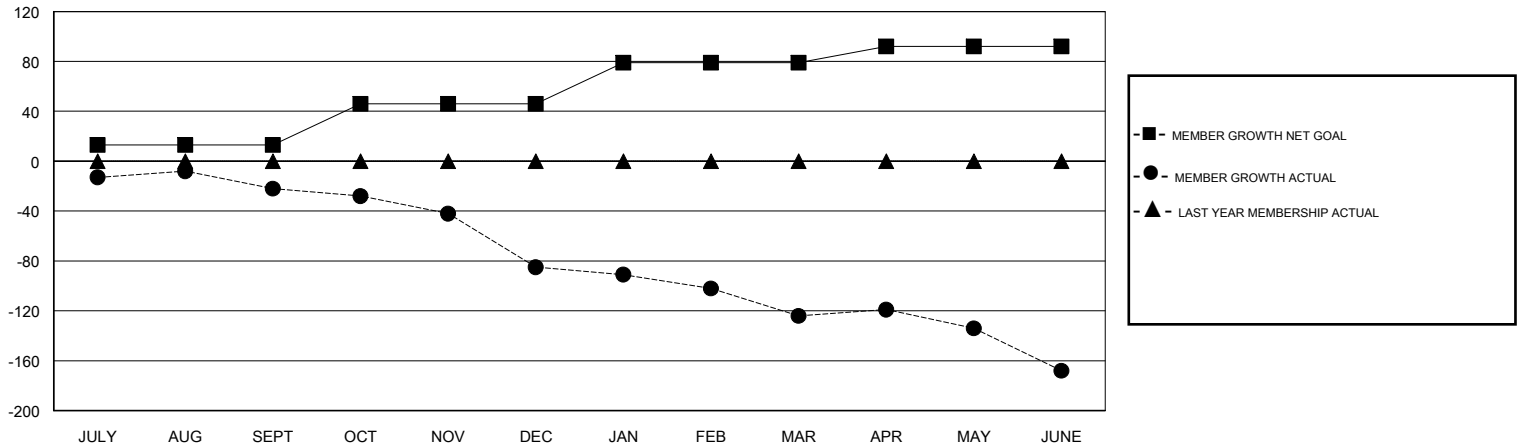
Clubs			
RESULTS FOR 2018-2019			
QUARTER	NEW CLUB GOAL	NEW CLUBS	DROPPED CLUBS
JULY/AUG/SEPT	0	1	2
OCT/NOV/DEC	1	0	1
JAN/FEB/MAR	1	0	1
APR/MAY/JUNE	0	0	1

Members			
RESULTS FOR 2018-2019			
QUARTER	MEMBER GROWTH NET GOAL	MEMBER GROWTH ACTUAL	DROPPED MEMBERS ACTUAL (including transfers)
JULY/AUG/SEPT	13	64	78
OCT/NOV/DEC	33	26	87
JAN/FEB/MAR	33	51	84
APR/MAY/JUNE	13	51	92

GOALS AND ACTUAL NEW CLUBS CUMULATIVE



GOALS AND ACTUAL MEMBERS CUMULATIVE



DROPPED CLUBS: 5	41 CLUBS OF 97 ADDED 1 OR MORE NEW MEMBERS	<u>GENDER DISTRIBUTION</u>	
DROPPED MEMBERS		MALE	1,347 (66.39%)
DECEASED	44	FEMALE	682 (33.61%)
CLUB CANCELLED	64	Women Percentage Fiscal Year Goal: 50%	
OTHER	233	TOTAL FAMILY UNIT MEMBERS	455
TOTAL	341	FAMILY MEMBERS PAYING HALF DUES	234

[CLICK HERE FOR CUMULATIVE MEMBERSHIP DATA](#)